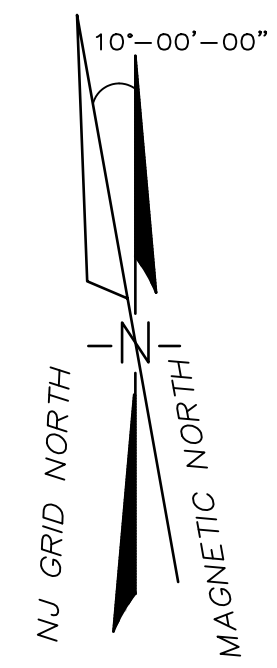
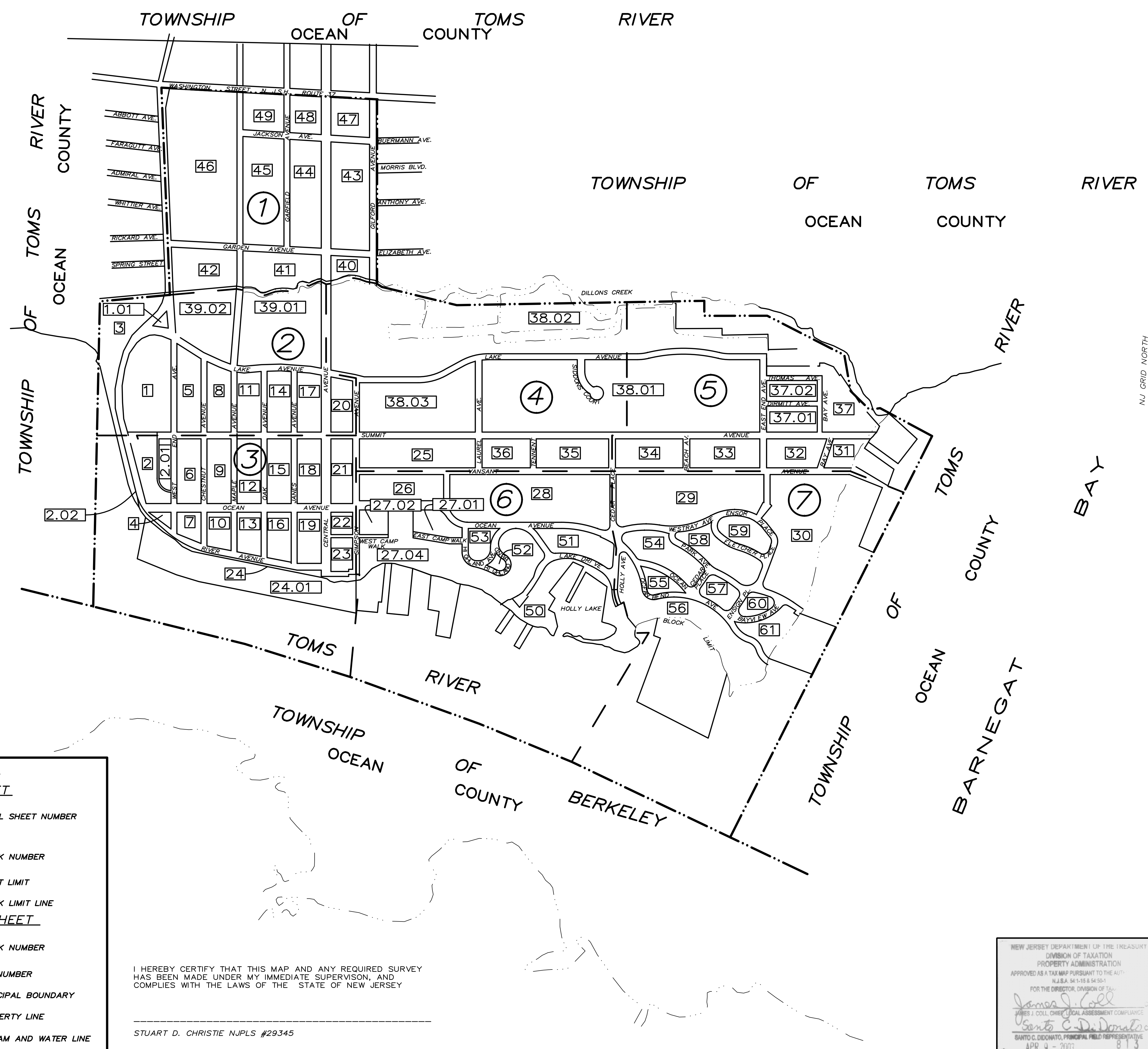


REVISIONS		
DATE	NAME	NO.
1/05	STUART D. CHRISTIE, P.L.S. - NJPLS# GS29345	1
12/05	STUART D. CHRISTIE, P.L.S. - NJPLS# GS29345	2
12/06	STUART D. CHRISTIE, P.L.S. - NJPLS# GS29345	3
12/07	STUART D. CHRISTIE, P.L.S. - NJPLS# GS29345	4
11/08	STUART D. CHRISTIE, P.L.S. - NJPLS# GS29345	5
1/13	STUART D. CHRISTIE, P.L.S. - NJPLS# GS29345	6
1/14	STUART D. CHRISTIE, P.L.S. - NJPLS# GS29345	7
10/14	STUART D. CHRISTIE, P.L.S. - NJPLS# GS29345	8
12/19	STUART D. CHRISTIE, P.L.S. - NJPLS# GS29345	9
1/21	JOSEPH CANADA, P.L.S. - NJPLS# GS43333	10
1/24	JOSEPH CANADA, P.L.S. - NJPLS# GS43333	11



THIS TAX MAP SUPERSEDES THE TAX MAP APPROVED OCTOBER 10, 1958

THIS MAP HAS BEEN DIGITALLY SCANNED AND REDRAWN USING COMPUTER AIDED DRAFTING/DESIGN (CAD/D) BASED ON THE MAP PREPARED BY WILSON M. HOPKINS JANUARY 1958

THE AREAS, BOUNDARIES AND DIMENSIONS SHOWN IN THIS TAX MAP ARE DERIVED FROM GROUND SURVEYS, AERIAL SURVEYS, AND RECORDED PLANS, MAPS, DEEDS, AND WILLS AND ARE TO BE USED FOR ASSESSMENT PURPOSES ONLY.

LEGEND

KEY SHEET

③ DETAIL SHEET NUMBER

24 BLOCK NUMBER

— SHEET LIMIT

— BLOCK LIMIT LINE

DETAIL SHEET

24 BLOCK NUMBER

2 LOT NUMBER

--- MUNICIPAL BOUNDARY

— PROPERTY LINE

--- STREAM AND WATER LINE

I HEREBY CERTIFY THAT THIS MAP AND ANY REQUIRED SURVEY HAS BEEN MADE UNDER MY IMMEDIATE SUPERVISION, AND COMPLIES WITH THE LAWS OF THE STATE OF NEW JERSEY

STUART D. CHRISTIE NJPLS #29345

NEW JERSEY DEPARTMENT OF THE TREASURY
DIVISION OF TAXATION
PROPERTY ADMINISTRATION
APPROVED AS A TAX MAP PURSUANT TO THE AUTHORITY OF N.J.S.A. 54:15-15 & 54:50-1
FOR THE DIRECTOR, DIVISION OF TAXATION
James J. Cole
JAMES J. COLL, CHIEF, LOCAL ASSESSMENT COMPLIANCE
Santo C. DiDonato
SANTO C. DIDONATO, PRINCIPAL FIELD REPRESENTATIVE
APR 9 - 2003 SERIAL NO. 813

TAX MAP
Borough of Island Heights
Ocean County, New Jersey
Scale: 1"=400' JULY 25, 2002
STUART D. CHRISTIE P.L.S.
NEW JERSEY PROFESSIONAL LAND SURVEYOR
LICENSE NO. 29345
O'DONNELL STANTON & ASSOCIATES, INC.
1705 ROUTE 37 EAST TOMS RIVER,
NEW JERSEY 08753
TO SHOW CONDITIONS AS OF JULY 25, 2002

TOWNSHIP OF TOMS RIVER

OCEAN COUNTY

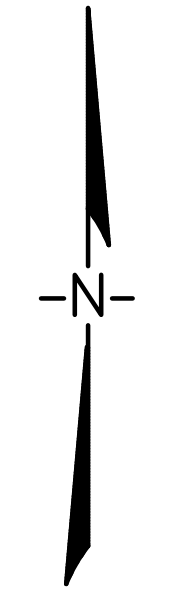
REVISIONS

DATE	NAME	NO.
1/05	STUART D. CHRISTIE, P.L.S. - NJPLS# GS29345	1
9/05	STUART D. CHRISTIE, P.L.S. - NJPLS# GS29345	2
12/06	STUART D. CHRISTIE, P.L.S. - NJPLS# GS29345	3
11/08	STUART D. CHRISTIE, P.L.S. - NJPLS# GS29345	4
9/08	ERIC V. WILDE, P.L.S. - NJPLS# GS43279	5
1/24	JOSEPH CANADA, P.L.S. - NJPLS# GS43333	6

RIVER COUNTY
TOMS COUNTY
OCEAN COUNTY
TOWNSHIP OF OCEAN TOWNSHIP



RIVER COUNTY
TOMS COUNTY
OCEAN COUNTY
TOWNSHIP OF OCEAN TOWNSHIP



THIS MAP HAS BEEN DIGITALLY SCANNED AND REDRAWN USING COMPUTER AIDED DRAFTING/DESIGN (CAD/D) BASED ON THE MAP PREPARED BY WILSON M. HOPKINS JANUARY 1958

TAX MAP

Borough of Island Heights
Ocean County, New Jersey
Scale: 1"=100' JULY 25, 2002

STUART D. CHRISTIE P.L.S.
NEW JERSEY PROFESSIONAL LAND SURVEYOR
LICENSE NO. 29345

O'DONNELL STANTON & ASSOCIATES, INC.
1705 ROUTE 37 EAST TOMS RIVER,
NEW JERSEY 08753

TO SHOW CONDITIONS AS OF JULY 25, 2002

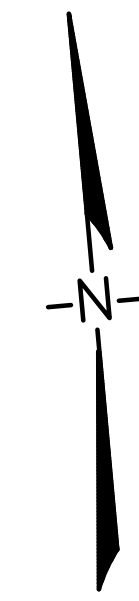
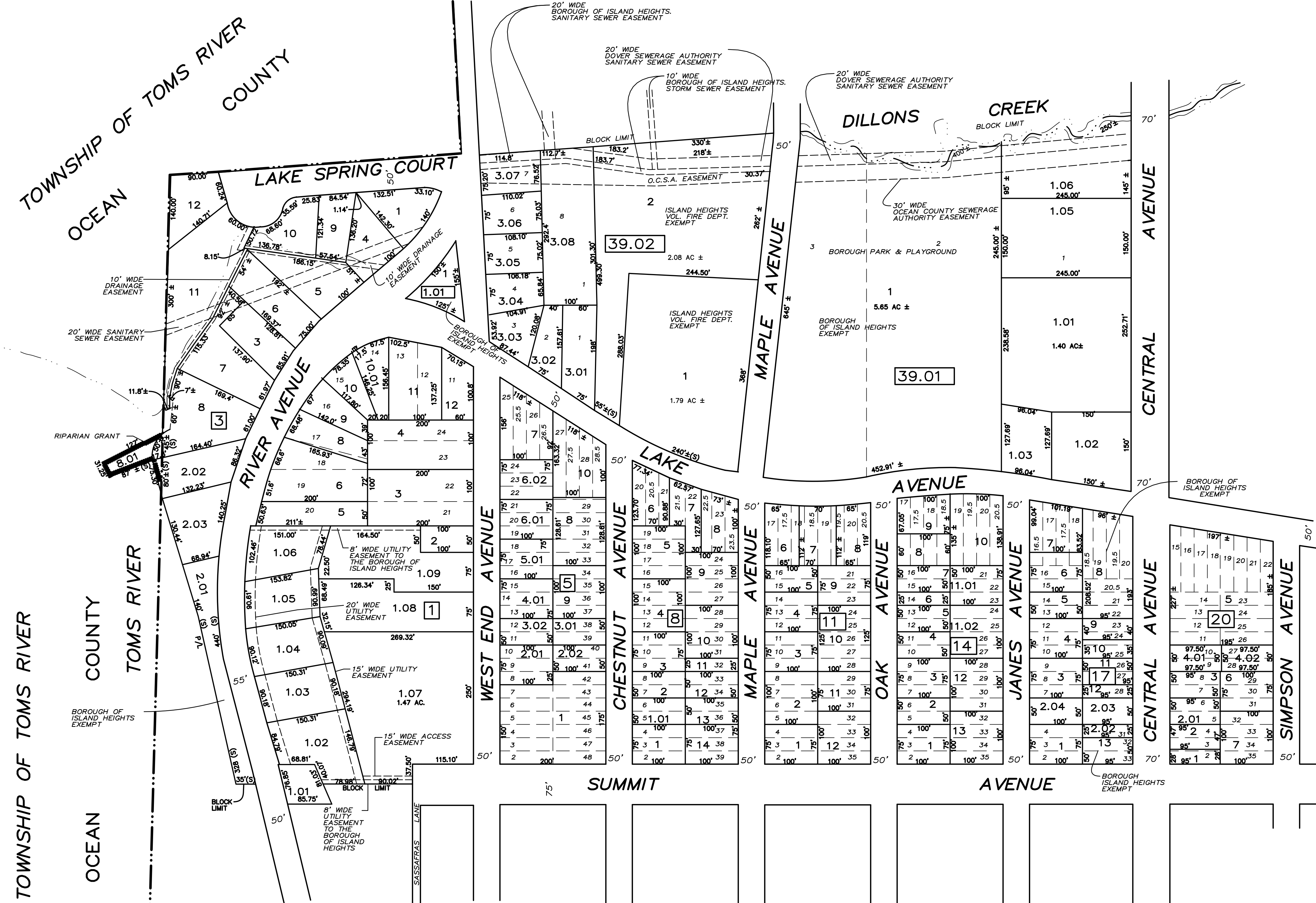
NEW JERSEY DEPARTMENT OF THE TREASURY
DIVISION OF TAXATION
PROPERTY ADMINISTRATION
APPROVED AS A TAX MAP PURSUANT TO THE AUTHORITY OF N.J.S.A. 54:15-8 & 9
FOR THE DIRECTOR, DIVISION OF TAXATION
James J. Coll
JAMES J. COLL, CHIEF, LOCAL ASSESSMENT COMPLIANCE
Santo C. DiDonato
SANTO C. DIDONATO, PRINCIPAL FIELD REPRESENTATIVE
APR 9 - 2003 SERIAL NO. 813

SHEET 4

SHEET 2

REVISIONS

DATE	NAME	NO.
03/06	STUART D. CHRISTIE P.L.S. NO.29345	1
12/06	STUART D. CHRISTIE P.L.S. NO.29345	2
08/11	STUART D. CHRISTIE P.L.S. NO.29345	3
1/28/16	GLEN J. LLOYD, P.L.S. NO. GS037598	4
09/18	ERIC V. WILDE P.L.S. NO. GS43279	5



THIS MAP HAS BEEN DIGITALLY SCANNED AND REDRAWN USING COMPUTER AIDED DRAFTING/DESIGN (CAD/D) BASED ON THE MAP PREPARED BY WILSON M. HOPKINS JANUARY 1958

TAX MAP

Borough of Island Heights
Ocean County, New Jersey
Scale: 1"=100' JULY 25, 2002

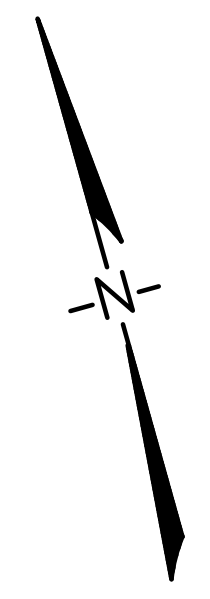
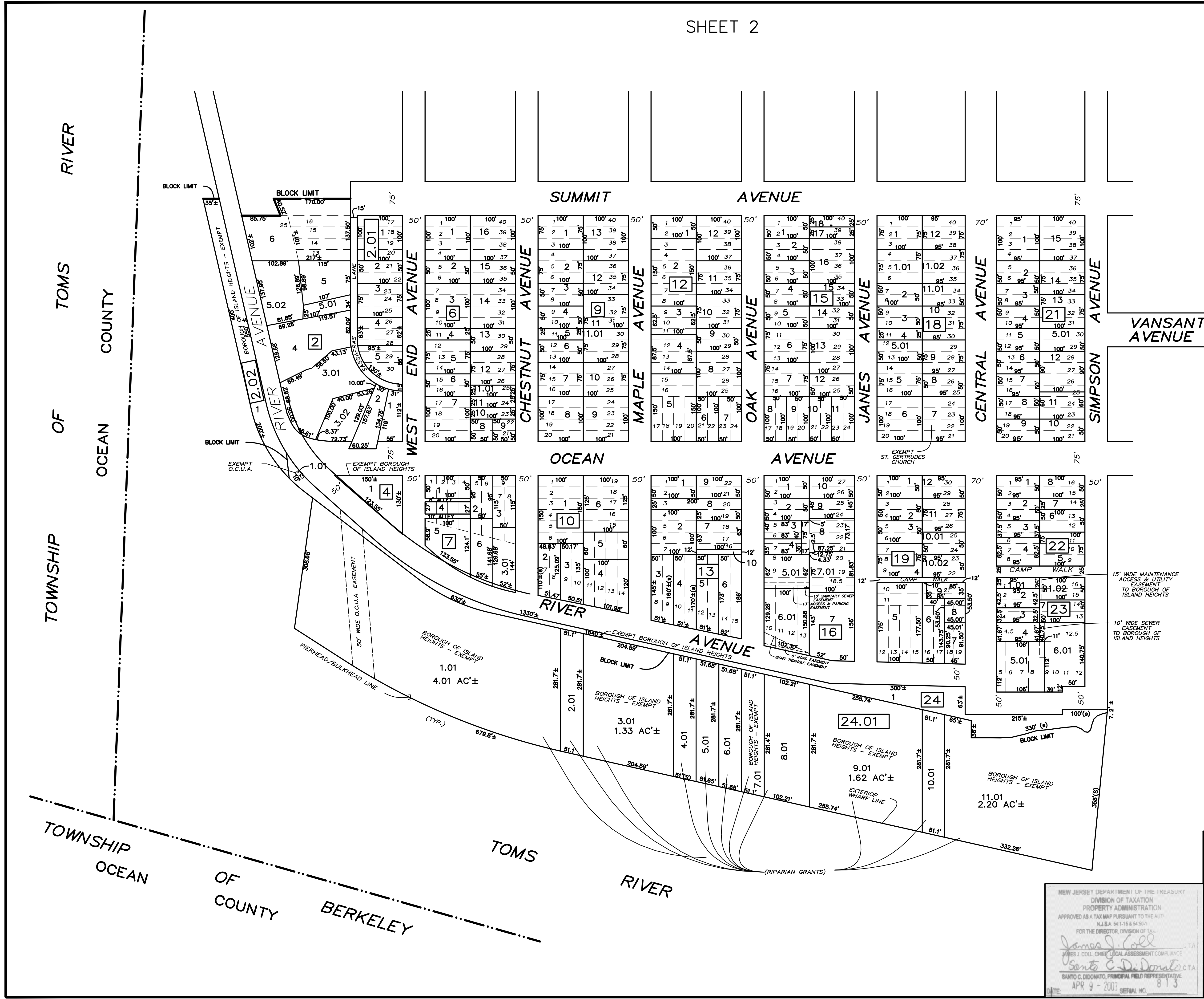
STUART D. CHRISTIE P.L.S.
NEW JERSEY PROFESSIONAL LAND SURVEYOR
LICENSE NO.29345

O'DONNELL STANTON & ASSOCIATES, INC.
1705 ROUTE 37 EAST TOMS RIVER,
NEW JERSEY 08753

TO SHOW CONDITIONS AS OF JULY 25, 2002

NEW JERSEY DEPARTMENT OF THE TREASURY
DIVISION OF TAXATION
PROPERTY ADMINISTRATION
APPROVED AS A TAX MAP PURSUANT TO THE AUTH.
N.J.S.A. 54:15-8 & 54:15-9
FOR THE DIRECTOR, DIVISION OF TAXATION
James J. Cole
JAMES J. COLE, CHIEF, LOCAL ASSESSMENT COMPLIANCE
Santo C. DiDonato
SANTO C. DIDONATO, PRINCIPAL FIELD REPRESENTATIVE
APR 9 - 2003 SERIAL NO. 813

REVISIONS		
DATE	NAME	NO.
12/06	STUART D. CHRISTIE P.L.S. NO.29345	1
01/13	STUART D. CHRISTIE P.L.S. NO.29345	2
09/18	ERIC V. WILDE P.L.S. NO. GS43279	3
01/24	JOSEPH CANADA, P.L.S. - NJPLS# GS43333	4



SHEET 4

SHEET 6

THIS MAP HAS BEEN DIGITALLY SCANNED AND REDRAWN USING COMPUTER AIDED DRAFTING/DESIGN (CAD/D) BASED ON THE MAP PREPARED BY WILSON M. HOPKINS JANUARY 1958

TAX MAP

Borough of Island Heights
 Ocean County, New Jersey
 Scale: 1"=100' JULY 25, 2002

STUART D. CHRISTIE P.L.S.
 NEW JERSEY PROFESSIONAL LAND SURVEYOR
 LICENSE NO. 29345

O'DONNELL STANTON & ASSOCIATES, INC.
 1705 ROUTE 37 EAST TOMS RIVER,
 NEW JERSEY 08753

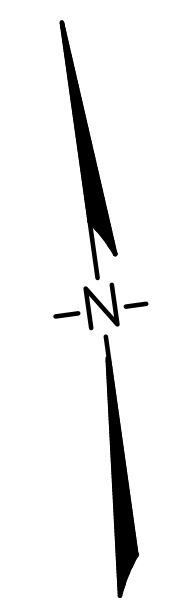
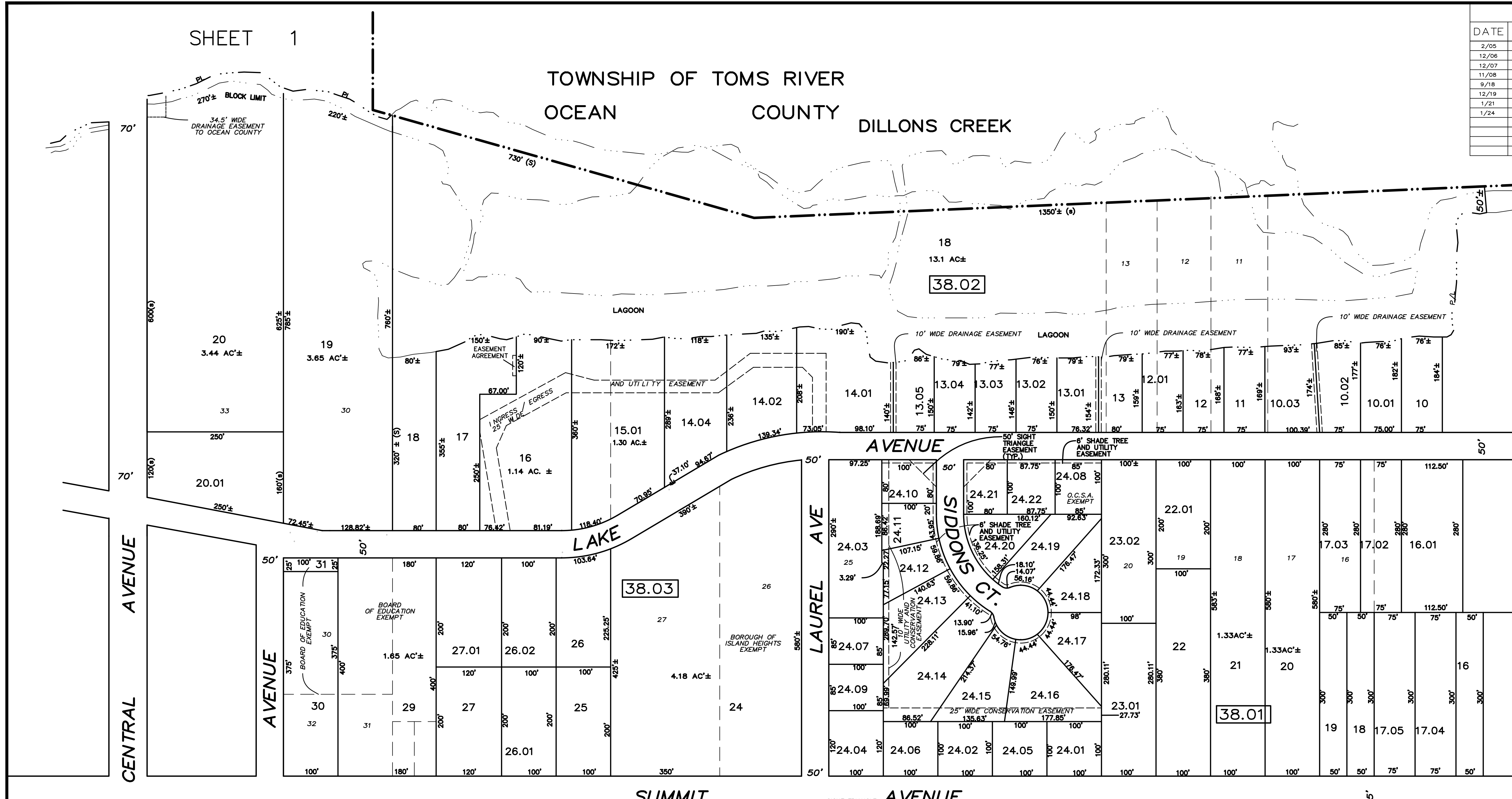
TO SHOW CONDITIONS AS OF JULY 25, 2002

NEW JERSEY DEPARTMENT OF THE TREASURY
 DIVISION OF TAXATION
 PROPERTY ADMINISTRATION
 APPROVED AS A TAX MAP PURSUANT TO THE ACT
 N.J.S.A. 54-18.18 & 18.53
 FOR THE DIRECTOR, DIVISION OF TAXATION
James J. Coll
 JAMES J. COLL, CHIEF, LOCAL ASSESSMENT COMPLIANCE
Santo C. DiDonato
 SANTO C. DIDONATO, PRINCIPAL FIELD REPRESENTATIVE
 DATE: APR 9 - 2003 SERIAL NO. 813

REVISIONS		
DATE	NAME	NO.
2/05	STUART D. CHRISTIE, P.L.S. - N.J.P.L.S.# GS29345	1
12/06	STUART D. CHRISTIE, P.L.S. - N.J.P.L.S.# GS29345	2
12/07	STUART D. CHRISTIE, P.L.S. - N.J.P.L.S.# GS29345	3
11/08	STUART D. CHRISTIE, P.L.S. - N.J.P.L.S.# GS29345	4
9/18	ERIC V. WILDE P.L.S. - N.J.P.L.S.# GS43279	5
12/19	STUART D. CHRISTIE, P.L.S. - N.J.P.L.S.# GS29345	6
1/21	JOSEPH CANADA, P.L.S. - N.J.P.L.S.# GS43333	7
1/24	JOSEPH CANADA, P.L.S. - N.J.P.L.S.# GS43333	8

SHEET 1

TOWNSHIP OF TOMS RIVER
OCEAN COUNTY DILLONS CREEK



SHEET 5

SHEET 3

SHEET 7

SHEET 6

THIS MAP HAS BEEN DIGITALLY SCANNED AND REDRAWN USING COMPUTER AIDED DRAFTING/DESIGN (CAD/D) BASED ON THE MAP PREPARED BY WILSON M. HOPKINS JANUARY 1958

TAX MAP

Borough of Island Heights
Ocean County, New Jersey
Scale: 1"=100' JULY 25, 2002

STUART D. CHRISTIE P.L.S.
NEW JERSEY PROFESSIONAL LAND SURVEYOR
LICENSE NO. 29345

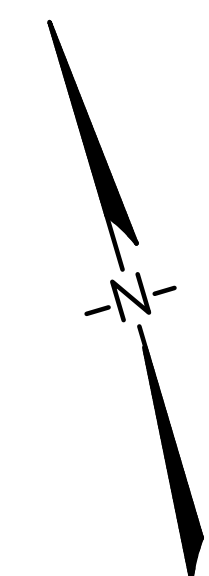
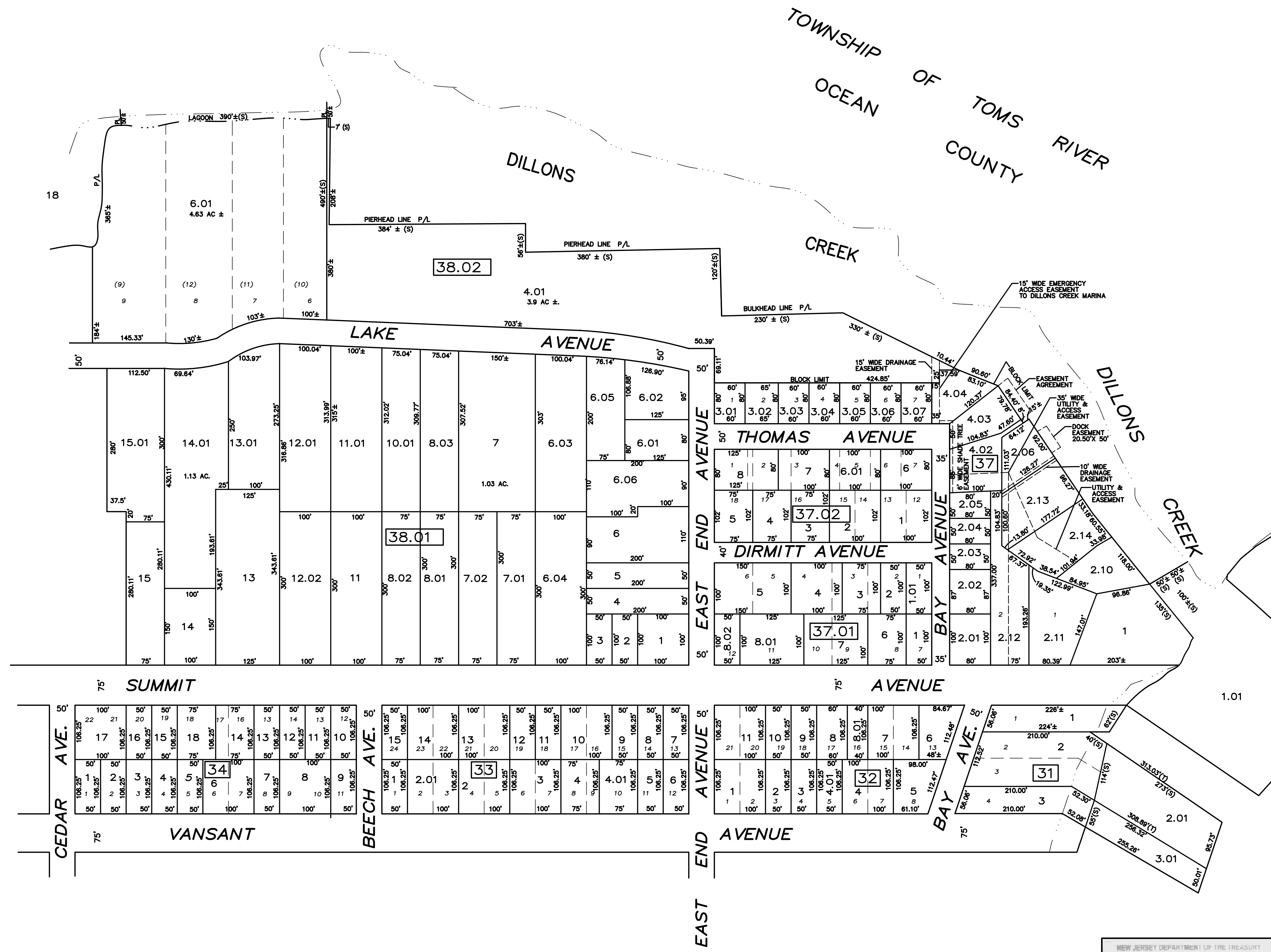
O'DONNELL STANTON & ASSOCIATES, INC.
1705 ROUTE 37 EAST TOMS RIVER,
NEW JERSEY 08753

TO SHOW CONDITIONS AS OF JULY 25, 2002

NEW JERSEY DEPARTMENT OF THE TREASURY
DIVISION OF TAXATION
PROPERTY ADMINISTRATION
APPROVED AS A TAX MAP PURSUANT TO THE ACT
N.J.S.A. 54:15-8 & 54:15-9
FOR THE DIRECTOR, DIVISION OF TAXATION
James J. Cole C.T.A.
JAMES J. COLL, CHIEF, LOCAL ASSESSMENT COMPLIANCE
Santo C. DiDonato C.T.A.
SANTO C. DICONATO, PRINCIPAL FIELD REPRESENTATIVE
DATE: APR 9 - 2003 SERIAL NO. 813

REVISIONS		
DATE	NAME	NO.
03/06	STUART D. CHRISTIE P.L.S. NO.29345	1
12/06	STUART D. CHRISTIE P.L.S. NO.29345	2
10/14	STUART D. CHRISTIE P.L.S. NO.29345	3
12/31/17	GLEN J. LLOYD, P.L.S. NO. GS037598	4
09/18	ERIC V. WILDE P.L.S. NO. GS43279	5
12/19	STUART D. CHRISTIE P.L.S. NO.29345	6
1/21	JOSEPH CANADA P.L.S. NO.29345	7

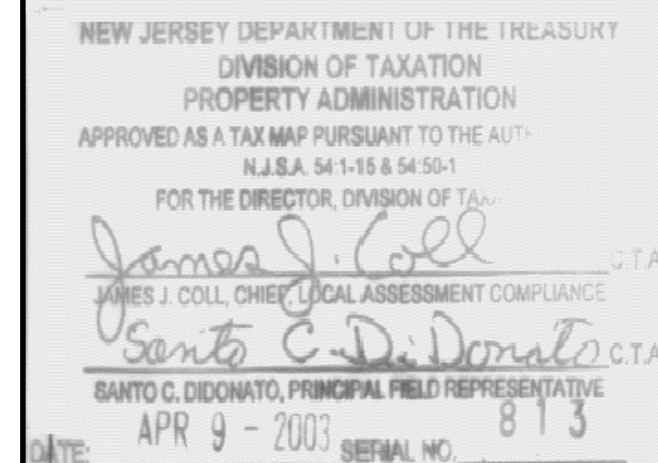
SHEET 4



SHEET 6

SHEET 7

THIS MAP HAS BEEN DIGITALLY SCANNED AND REDRAWN USING COMPUTER AIDED DRAFTING/DESIGN (CAD/D) BASED ON THE MAP PREPARED BY WILSON M. HOPKINS JANUARY 1958



TAX MAP
 Borough of Island Heights
 Ocean County, New Jersey
 Scale: 1"=100' JULY 25, 2002
STUART D. CHRISTIE P.L.S.
 NEW JERSEY PROFESSIONAL LAND SURVEYOR
 LICENSE NO.29345
 O'DONNELL STANTON & ASSOCIATES, INC.
 1705 ROUTE 37 EAST TOMS RIVER,
 NEW JERSEY 08753
 TO SHOW CONDITIONS AS OF JULY 25, 2002

DATE	NAME	NO.
01/13	STUART D. CHRISTIE P.L.S. NO. 29345	1
01/14	STUART D. CHRISTIE P.L.S. NO. 29345	2
10/14	STUART D. CHRISTIE P.L.S. NO. 29345	3
09/18	ERIC V. WILDE P.L.S. NO. GS43279	4
12/19	STUART D. CHRISTIE P.L.S. NO. 29345	5
01/22	JOSEPH CANADA P.L.S. NO. 43333	6
01/24	JOSEPH CANADA P.L.S. NO. 43333	7

SHEET 3

SHEET 7



THIS MAP HAS BEEN DIGITALLY SCANNED AND REDRAWN USING COMPUTER AIDED DRAFTING/DESIGN (CAD/D) BASED ON THE MAP PREPARED BY WILSON M. HOPKINS JANUARY 1958

TAX MAP

Borough of Island Heights
Ocean County, New Jersey
Scale: 1"=100' JULY 25, 2002

STUART D. CHRISTIE P.L.S.
NEW JERSEY PROFESSIONAL LAND SURVEYOR
LICENSE NO. 29345

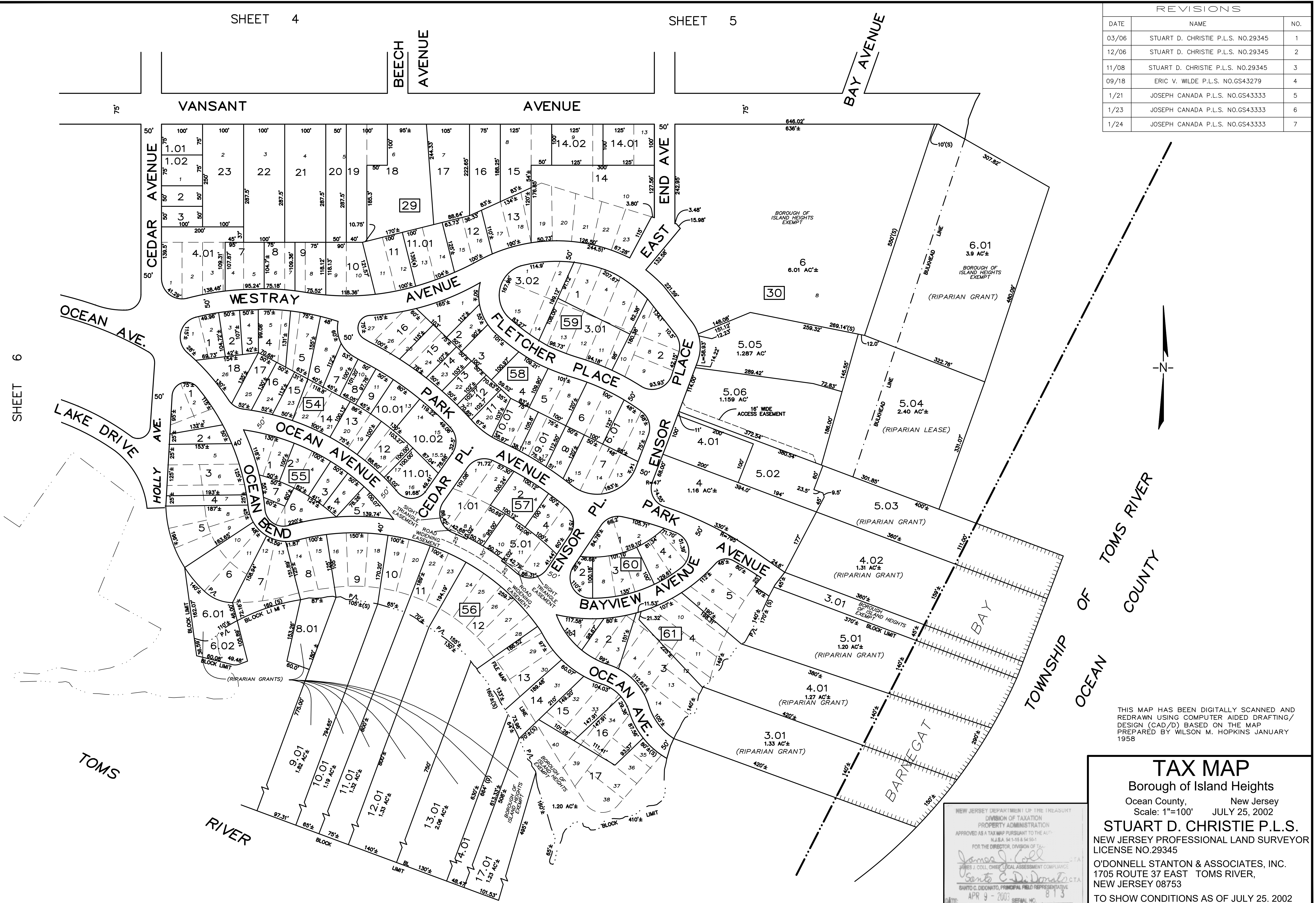
O'DONNELL STANTON & ASSOCIATES, INC.
1705 ROUTE 37 EAST TOMS RIVER,
NEW JERSEY 08753

TO SHOW CONDITIONS AS OF JULY 25, 2002

NEW JERSEY DEPARTMENT OF THE TREASURY
DIVISION OF TAXATION
PROPERTY ADMINISTRATION
APPROVED AS A TAX MAP PURSUANT TO THE AUTH. N.J.S.A. 54:15-8 & 54:15-9
FOR THE DIRECTOR, DIVISION OF TAXATION
James J. Coll
James J. Coll, Chief, Local Assessment Compliance
Santo C. DiDonato
Santo C. DiDonato, Principal Field Representative
DATE: APR 9 - 2003 SERIAL NO. 813

TOWNSHIP OF BERKELEY COUNTY
OCEAN

DATE	NAME	NO.
03/06	STUART D. CHRISTIE P.L.S. NO.29345	1
12/06	STUART D. CHRISTIE P.L.S. NO.29345	2
11/08	STUART D. CHRISTIE P.L.S. NO.29345	3
09/18	ERIC V. WILDE P.L.S. NO.GS43279	4
1/21	JOSEPH CANADA P.L.S. NO.GS43333	5
1/23	JOSEPH CANADA P.L.S. NO.GS43333	6
1/24	JOSEPH CANADA P.L.S. NO.GS43333	7



THIS MAP HAS BEEN DIGITALLY SCANNED AND REDRAWN USING COMPUTER AIDED DRAFTING/DESIGN (CAD/D) BASED ON THE MAP PREPARED BY WILSON M. HOPKINS JANUARY 1958

TAX MAP
 Borough of Island Heights
 Ocean County, New Jersey
 Scale: 1"=100' JULY 25, 2002

STUART D. CHRISTIE P.L.S.
 NEW JERSEY PROFESSIONAL LAND SURVEYOR
 LICENSE NO.29345

O'DONNELL STANTON & ASSOCIATES, INC.
 1705 ROUTE 37 EAST TOMS RIVER,
 NEW JERSEY 08753

TO SHOW CONDITIONS AS OF JULY 25, 2002

NEW JERSEY DEPARTMENT OF THE TREASURY
 DIVISION OF TAXATION
 PROPERTY ADMINISTRATION
 APPROVED AS A TAX MAP PURSUANT TO THE AUTHORITY OF N.J.S.A. 54:15-8 & 54:15-9
 FOR THE DIRECTOR, DIVISION OF TAXATION

James J. Coll
 James J. Coll, Chief, Local Assessment Compliance

Santo C. DiDonato
 Santo C. DiDonato, Principal Field Representative

APR 9 - 2003 SERIAL NO. 813

SHEET 6

7

7